



G3K

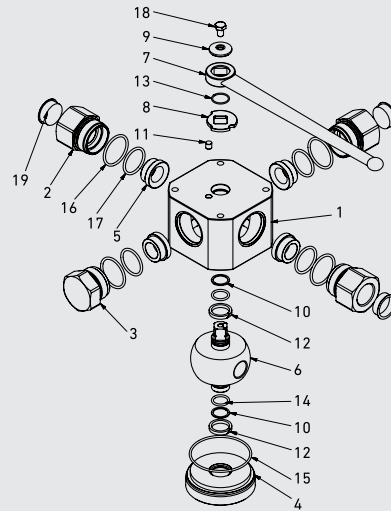
3-WAY HIGH PRESSURE BALL VALVES

Edition. 21.2

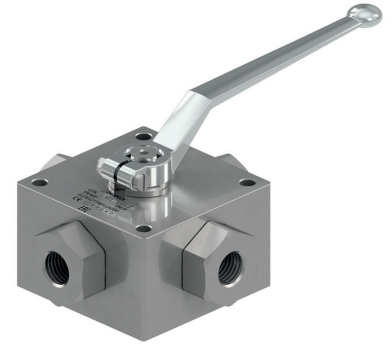
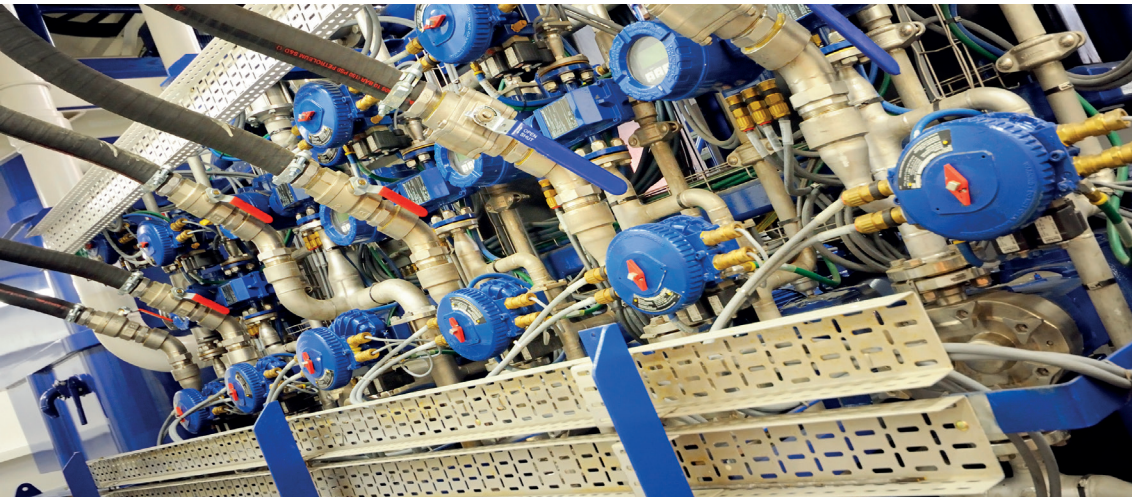
CS Carbon Steel

- Type: ball valve 3 way
- Sizes: from DN6 up to DN25
- Ends: BSP-NPT
- Pressure: up to PN500
- Temp range: from -20°C to +100°C
- Treatment: Galvanized

STANDARD COMPOSITION OF VALVE



| POS | DESCRIPTION | Q.TY | CS | POS | DESCRIPTION | Q.TY | CS |
|-----|------------------|------|--------------|-----|-----------------|------|--------------|
| | | | Carbon Steel | | | | Carbon Steel |
| | | | MATERIAL | | | | MATERIAL |
| 1 | Body | 1 | 1,0737 | 11 | Pin | 1 | 1,0737 |
| 2 | Adapter | 3 | 1,0737 | 12 | Body ring | 2 | PTFE |
| 3 | Close adapter | 1 | 1,0737 | 13 | Seeger | 1 | 1,4404 |
| 4 | Stemball adapter | 1 | 1,0737 | 14 | Stemball o-ring | 2 | NBR |
| 5 | Ball seat | 4 | POM | 15 | Body o-ring | 1 | NBR |
| 6 | Ball stem | 1 | 1,0737 | 16 | Adapter o-ring | 4 | NBR |
| 7 | Handle | 1 | ZINC | 17 | Seal o-ring | 4 | NBR |
| 8 | Washer | 1 | 1,0116 | 18 | Screw | 1 | DIN 6921 8.8 |
| 9 | Washer | 1 | 1,0116 | 19 | Caps | 4 | PVC |
| 10 | Stemball ring | 2 | PTFE | | | | |



CODE DESCRIPTION STRUCTURE

| | | | | | | | | | |
|-----|-----|------|-----|---|---|---|---|---|---|
| G3K | K01 | G1/4 | DN6 | 1 | 1 | 1 | 1 | A | B |
|-----|-----|------|-----|---|---|---|---|---|---|

Type and way of valve

G3K 3-way

Type of way

- L K01
- T K02
- X K14

Ends

GAS DIN/ NPT ANSI
ISO 228 /ASME
BSP B1.20.1

- G 1/4 N 1/4
- G 3/8 N 3/8
- G 1/2 N 1/2
- G 3/4 N 3/4
- G 1 N 1
- G 1 1/4 R N 1 1/4 R
- G 1 1/2 R N 1 1/2 R

Size

from DN6 to DN25

Body Material

- 1 = 1,0737

Adapter material

- 1 = 1,0737

Stem material

- 1 = 1,0737 4 = 1,4404*

Ball Material

- 1 = 1,0737 4 = 1,4404*

Seat material

A = POM

Seal material

B = NBR

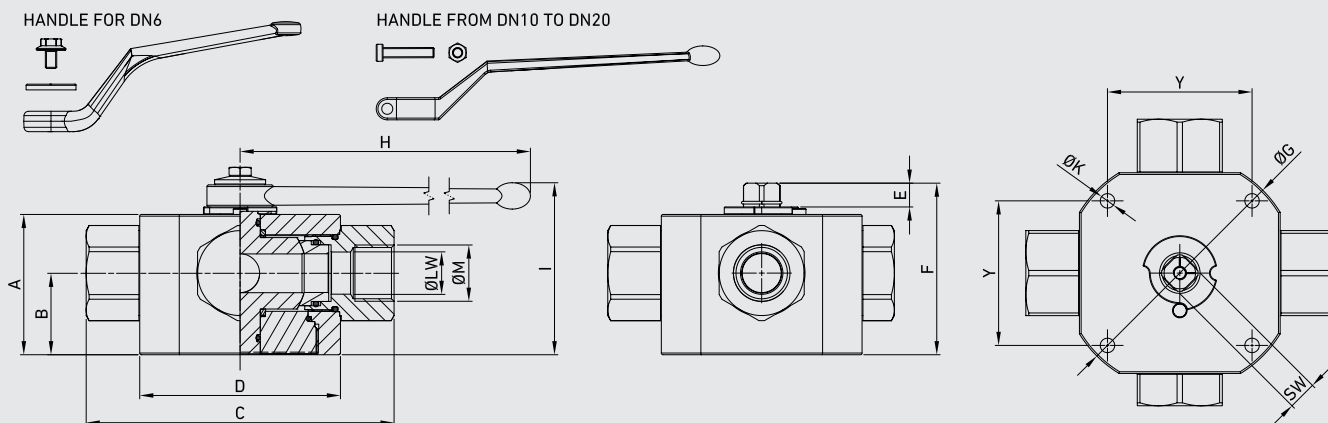
***On request**

- Reduced bore
- Special threads
- Pressure class up to PN35 MPa
- Pneumatic and electrical actuator
- Locking device

For further special requests please consult our technical/commercial service.

G3K

HYDRAULIC BALL VALVES



G3K DIN ISO 228 BSP

| TYPE | DN | PN | A | B | C | D | E | F | ØG | H | I | ØK | ØM | Y | SW | ØLW | WEIGHT |
|---------------|----|----------|-----------|------|------|------|------|-------|------|-------|-------|------|---------|------|------|------|----------|
| G3K G 1/4 | 6 | MPa 50 | mm 42 | 21,5 | 100 | 70 | 11 | 56,5 | - | 110 | 97,5 | 6,5 | G 1/4 | 55 | 9 | 6 | kg 1,767 |
| | | Psi 7250 | inch 1,65 | 0,85 | 3,94 | 2,76 | 0,43 | 2,22 | - | 4,33 | 3,84 | 0,26 | | 2,17 | 0,35 | 0,24 | lb 3,90 |
| G3K G 3/8 | 10 | MPa 50 | mm 53 | 28,5 | 115 | 80 | 14 | 71,5 | - | 180 | 101 | 6,5 | G 3/8 | 65 | 14 | 10 | kg 3,018 |
| | | Psi 7250 | inch 2,09 | 1,12 | 4,53 | 3,15 | 0,55 | 2,81 | - | 7,09 | 3,98 | 0,26 | | 2,56 | 0,55 | 0,39 | lb 6,65 |
| G3K G 1/2 | 13 | MPa 40 | mm 62 | 33 | 136 | 100 | 14 | 80,5 | - | 180 | 110 | 8,5 | G 1/2 | 80 | 14 | 13 | kg 5,247 |
| | | Psi 5800 | inch 2,44 | 1,30 | 5,35 | 3,94 | 0,55 | 3,17 | - | 7,09 | 4,33 | 0,33 | | 3,15 | 0,55 | 0,51 | lb 11,57 |
| G3K G 3/4 | 20 | MPa 35 | mm 68 | 36 | 156 | 113 | 14 | 86,5 | - | 300 | 116,5 | 8,5 | G 3/4 | 85 | 14 | 20 | kg 6,898 |
| | | Psi 5075 | inch 2,68 | 1,42 | 6,14 | 4,45 | 0,55 | 3,41 | - | 11,81 | 4,59 | 0,33 | | 3,35 | 0,55 | 0,79 | lb 15,21 |
| G3K G 1 | 25 | MPa 35 | mm 82 | 47,5 | 181 | 118 | 14 | 100,5 | 138 | 300 | 130,5 | 8,5 | G 1 | 85 | 14 | 25 | kg 9,005 |
| | | Psi 5075 | inch 3,23 | 1,87 | 7,13 | 4,65 | 0,55 | 3,96 | 5,43 | 11,81 | 5,14 | 0,33 | | 3,35 | 0,55 | 0,98 | lb 19,85 |
| G3K G 1 1/4 R | 25 | MPa 35 | mm 82 | 47,5 | 181 | 118 | 14 | 100,5 | 138 | 300 | 130,5 | 8,5 | G 1 1/4 | 85 | 14 | 25 | kg 8,989 |
| | | Psi 5075 | inch 3,23 | 1,87 | 7,13 | 4,65 | 0,55 | 3,96 | 5,43 | 11,81 | 5,14 | 0,33 | | 3,35 | 0,55 | 0,98 | lb 19,82 |
| G3K G 1 1/2 R | 25 | MPa 35 | mm 82 | 47,5 | 181 | 118 | 14 | 100,5 | 138 | 300 | 130,5 | 8,5 | G 1 1/2 | 85 | 14 | 25 | kg 9,213 |
| | | Psi 5075 | inch 3,23 | 1,87 | 7,13 | 4,65 | 0,55 | 3,96 | 5,43 | 11,81 | 5,14 | 0,33 | | 3,35 | 0,55 | 0,98 | lb 20,31 |

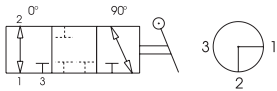
G3K ANSI/ASME B1.20.1 NPT

| TYPE | DN | PN | A | B | C | D | E | F | ØG | H | I | ØK | ØM | Y | SW | ØLW | WEIGHT |
|---------------|----|----------|-----------|------|------|------|------|-------|------|-------|-------|------|---------|------|------|------|----------|
| G3K N 1/4 | 6 | MPa 50 | mm 42 | 21,5 | 100 | 70 | 11 | 56,5 | - | 110 | 97,5 | 6,5 | N 1/4 | 55 | 9 | 6 | kg 1,767 |
| | | Psi 7250 | inch 1,65 | 0,85 | 3,94 | 2,76 | 0,43 | 2,22 | - | 4,33 | 3,84 | 0,26 | | 2,17 | 0,35 | 0,24 | lb 3,90 |
| G3K N 3/8 | 10 | MPa 50 | mm 53 | 28,5 | 115 | 80 | 14 | 71,5 | - | 180 | 101 | 6,5 | N 3/8 | 65 | 14 | 10 | kg 3,018 |
| | | Psi 7250 | inch 2,09 | 1,12 | 4,53 | 3,15 | 0,55 | 2,81 | - | 7,09 | 3,98 | 0,26 | | 2,56 | 0,55 | 0,39 | lb 6,65 |
| G3K N 1/2 | 13 | MPa 40 | mm 62 | 33 | 136 | 100 | 14 | 80,5 | - | 180 | 110 | 8,5 | N 1/2 | 80 | 14 | 13 | kg 5,247 |
| | | Psi 5800 | inch 2,44 | 1,30 | 5,35 | 3,94 | 0,55 | 3,17 | - | 7,09 | 4,33 | 0,33 | | 3,15 | 0,55 | 0,51 | lb 11,57 |
| G3K N 3/4 | 20 | MPa 35 | mm 68 | 36 | 156 | 113 | 14 | 86,5 | - | 300 | 116,5 | 8,5 | N 3/4 | 85 | 14 | 20 | kg 6,898 |
| | | Psi 5075 | inch 2,68 | 1,42 | 6,14 | 4,45 | 0,55 | 3,41 | - | 11,81 | 4,59 | 0,33 | | 3,35 | 0,55 | 0,79 | lb 15,21 |
| G3K N 1 | 25 | MPa 35 | mm 82 | 47,5 | 181 | 118 | 14 | 100,5 | 138 | 300 | 130,5 | 8,5 | N 1 | 85 | 14 | 25 | kg 9,005 |
| | | Psi 5075 | inch 3,23 | 1,87 | 7,13 | 4,65 | 0,55 | 3,96 | 5,43 | 11,81 | 5,14 | 0,33 | | 3,35 | 0,55 | 0,98 | lb 19,85 |
| G3K N 1 1/4 R | 25 | MPa 35 | mm 82 | 47,5 | 181 | 118 | 14 | 100,5 | 138 | 300 | 130,5 | 8,5 | N 1 1/4 | 85 | 14 | 25 | kg 8,989 |
| | | Psi 5075 | inch 3,23 | 1,87 | 7,13 | 4,65 | 0,55 | 3,96 | 5,43 | 11,81 | 5,14 | 0,33 | | 3,35 | 0,55 | 0,98 | lb 19,82 |
| G3K N 1 1/2 R | 25 | MPa 35 | mm 82 | 47,5 | 181 | 118 | 14 | 100,5 | 138 | 300 | 130,5 | 8,5 | N 1 1/2 | 85 | 14 | 25 | kg 9,213 |
| | | Psi 5075 | inch 3,23 | 1,87 | 7,13 | 4,65 | 0,55 | 3,96 | 5,43 | 11,81 | 5,14 | 0,33 | | 3,35 | 0,55 | 0,98 | lb 20,31 |

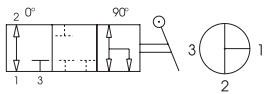
G3K DIN ISO 228 BSP

G3K ANSL/ASME B1.20.1 NPT

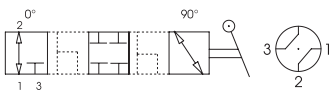
L scheme
G3 K01



T scheme
G3 K02



X scheme
G3 K14



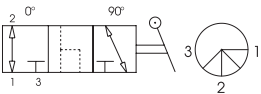
| | CS Carbon Steel | | CS Carbon Steel |
|--|--------------------|-----------------|--------------------|
| | ØLW-K01 | ITEM CODE G3K01 | ØLW-K01 |
| | 6 | G23GGT15011A000 | 6 |
| | 10 | G23GGT25011A000 | 10 |
| | 13 | G23GGT34011A000 | 13 |
| | 19 | G23GGT43011A000 | 19 |
| | 23 | G23GGT53011A000 | 23 |
| | 23 | G23GGR63011A000 | 23 |
| | 23 | G23GGR73011A000 | 23 |

| | CS Carbon Steel | | CS Carbon Steel |
|--|--------------------|-----------------|--------------------|
| | ØLW-K02 | ITEM CODE G3K02 | ØLW-K02 |
| | 6 | G2AGGT15011A000 | 6 |
| | 10 | G2AGGT25011A000 | 10 |
| | 13 | G2AGGT34011A000 | 13 |
| | 19 | G2AGGT43011A000 | 19 |
| | 23 | G2AGGT53011A000 | 23 |
| | 23 | G2AGGR63011A000 | 23 |
| | 23 | G2AGGR73011A000 | 23 |

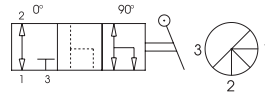
| | CS Carbon Steel | | CS Carbon Steel |
|--|--------------------|-----------------|--------------------|
| | ØLW-K14 | ITEM CODE G3K14 | ØLW-K14 |
| | 5 | G2BGGT15011A000 | 5 |
| | 7 | G2BGGT25011A000 | 7 |
| | 10 | G2BGGT34011A000 | 10 |
| | 15 | G2BGGT43011A000 | 15 |
| | 17 | G2BGGT53011A000 | 17 |
| | 17 | G2BGR63011A000 | 17 |
| | 17 | G2BGR73011A000 | 17 |

Special schemes on request

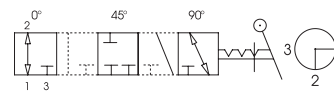
G3 K03



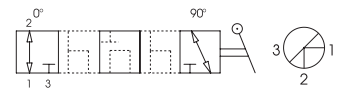
G3 K04



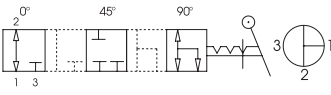
G3 K05



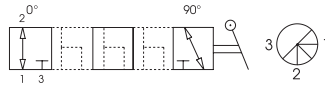
G3 K06



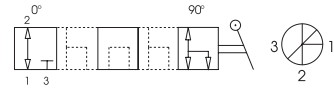
G3 K07



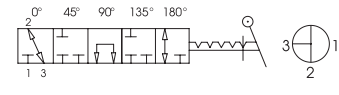
G3 K08



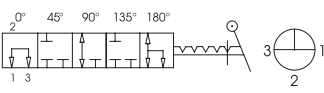
G3 K09



G3 K10



G3 K11



G3 K12

